

OLLI bits & bytes!

Osher Lifelong Learning Institute at CSU, Chico

ADD CLASSES IF YOU'D LIKE... THE 5-CLASS LIMIT HAS BEEN LIFTED

To provide fairer opportunities for members to enroll in their favorite classes, we use the 5-class limit policy through the first few weeks of registration. The **limit has been lifted** and members can now enroll in unlimited classes where space is available. Go to the OLLI class schedule at oli.csuchico.edu.

OLLI PEER LEADER WINS PRIZE AT INTERNATIONAL FILM FEST

Lynn Elliott's screenplay slated to become a movie!

Lynn has been leading OLLI classes for three years, and he dazzles members with his storytelling—something he learned from his father growing up in Wales. A retired professor emeritus of English at CSU, Chico, Lynn has taught the art of storytelling for decades but has ventured into playwriting and screenwriting more recently. And with success! Lynn debuted his first musical, Rodeo, two years ago. Since then, he's turned his focus to writing scripts for the big screen. In October, he was named a finalist in the Best Action/Adventure and Global Script Challenge, where he also won a Partner in Industry award. [Read Mary Nugent's full story](#) about Lynn's Oaxaca FilmFest experience.



All smiles at the Oaxaca FilmFest, October

SPRING BUS TRIP

LAST CALL de Young museum trip: 2 exhibits, 1 great day!

Pre-Trip Lecture: Thursday, Feb. 21 at 1pm at Gordon 1

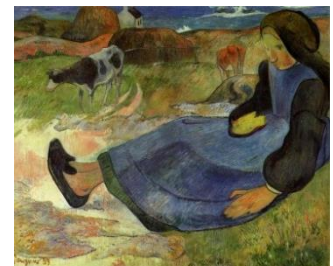
Bus Trip to Museum: Sunday, February 24 (All Day)

We have a second bus and seats to fill! Currently, we have 26 open seats, gather up some friends and sign up today by calling the OLLI office.

OLLI Camp Fire Evacuees: \$35

OLLI Members: \$95

OLLI Guests: \$105



Paul Gauguin,
"Breton Girl," 1889.
Oil on canvas,
28 1/8 x 35 5/8 in.

FALL AND SPRING '19 COURSE PROPOSALS DUE MARCH 6

Members find meaning through learning

We know our members learn for the love of it. We also know our volunteer instructors teach for the love of it. Whether you've led a class in the past or could be convinced to lead one for the first time, we hope you'll consider submitting a course proposal for the summer, fall...or BOTH! **You can find both online proposal forms on the [Peer Leader Resources page](#)** of the OLLI website, along with a wealth of helpful information for both new and veteran Peer Leaders. **Summer and fall proposals are due March 6.**

Do you know someone who you think would make a good peer leader for OLLI? Let us know. We'd love to meet them!

JANET TURNER PRINT MUSEUM INVITES OLLI TO EXPLORE

OLLI class brings members to campus. Join us in February!

The Janet Turner Print Museum is a rich community resource with a collection of over 4,000 fine art prints, including work by artists from more than 40 countries. **The Turner's OLLI class offers a hands-on introduction** to the life of the museum, with lively discussions of art, as well as a chance to make a print and explore the Print Archive to see how the collection is preserved. Meeting at the Turner on three **Thursdays, 2/21, 3/21 and 4/25, from 10:30-noon**, we invite you to explore this fabulous Chico treasure.

Also, please join the Turner in welcoming special guest artist Jacob Meders, this Saturday, February 9, at 2pm. Mr. Meders is a member of the Mechoopda Indian Tribe and art faculty at Arizona State Univ. He'll talk about his concurrent exhibitions in the Jacki Headley University Art Gallery and Janet Turner Print Museum. Meders creates a "call and response," where Native American representation is reconsidered through its past and a dynamic, changing present.



Guest artist
Jacob Meders at work
in his Arizona studio

SEEKING NEW COMMUNITY PARTNERS

OLLI programming improves through local outreach

OLLI community partners play a vital role in enabling OLLI to offer more in the way of classes, bus trips, and social events. Our business sponsors, in particular, help in other ways—by offsetting the cost of memberships and by providing scholarship dollars to assist members who cannot afford the annual fee. Some sponsors also offer classes, like Enloe Medical Center's Healthier You! lecture series at their conference center on the Esplanade. Do you know a local business whose mission aligns with ours? These partnerships have been a win for OLLI, and our sponsors tell us it is a win for them, too! Please call the OLLI office with recommendations or call Gayle Womack, Outreach Coordinator, directly at (530) 624-2807 or gawomack@csuchico.edu.

SCHEDULE CORRECTION

The Chant of Compassion: February 20, 4:30 – 6 pm

OLLI Peer Leader Matt Cavender will be leading a special class to assist with the trauma of the Camp Fire or anyone suffering from a heavy heart or loss. Matt will be leading a 1,000-year-old chant that when practiced is said to have healing effects. Read more about this class. A second section will be repeated on March 20, during Spring Break, from 4:30 – 6 pm at the Lodge at the Terraces.

SPRING 2019 CALENDAR

Mark your calendars!

February 24..... Spring Bus Trip to the deYoung Museum (All Day)
March 6..... Summer '19 & Fall '19 Course Proposals Due
March 13 General Meeting, 11:30am – 1pm at Masonic Family Center
March 18-22..... Spring Break (OLLI Closed)
April 1 Cesar Chaves Holiday Observed (OLLI Closed)
April 11-13 OLLI Play Festival, 7:30 pm at Blue Room Theater
April 14 OLLI Play Festival, 2 pm at Blue Room Theater
April 17 Business Meeting, , 11:30am – 1pm at Masonic Family Center



HAVE SOMETHING TO SHARE?

If you have something to say, a photo to share, or a question to pose to the editor, you can submit information using our new “[OLLI Newsletter Submission](#)” form.



Web: olli.csuchico.edu • Phone: 530-898-6679 • E-mail: olli@csuchico.edu