

## CSU Chico University Housing and Food Services

The University Village is the only university-owned apartment complex and a unique housing facility in Chico. Because the University Village is a part of the University Housing and Food Service, students enjoy many of the benefits that our on-campus residents have such as community building, use of the recreation center, a computer lab, and live-in staff.

The University Village is a leisurely (just a little less than a mile) bike ride from campus. Free bus service to and from campus is available.

The University Village features single or double-occupancy, furnished rooms with telephone, television hook-ups, and shared general bathrooms and kitchen facilities.

### Residence Halls Rates 2009-2010

#### University Village (University owned Off-Campus Apartments)

Located approximately one mile from campus

|                                                                                        | Fall/Spring | 8-week term |
|----------------------------------------------------------------------------------------|-------------|-------------|
| <b>4-Person Cluster Apartment</b><br>4 students per cluster, kitchen facilities        | \$7,722.00  | \$1,767.12  |
| <b>6-Person Cluster Double Apartment</b><br>6 students per cluster, kitchen facilities | \$6,398.00  | \$1,468.84  |
| <b>6-Person Cluster Single Apartment</b><br>6 students per cluster, kitchen facilities | \$7,722.00  | \$1,767.12  |
| <b>2-Person Double Studio Apartment</b><br>2 students per room, kitchen facilities     | \$6,398.00  | \$1,465.84  |

#### \*Meal Ticket Option:

Rates apply to one semester only. A new meal ticket must be purchased at the start of each semester.

| Number of Meals per Week | Approximate Rate per Semester |
|--------------------------|-------------------------------|
| 5 of your choice         | \$ 531.00                     |
| 10 of your choice        | \$ 1,046.00                   |
| 15 of your choice        | \$ 1,437.00                   |

Note: Rates are subject to change without notice. University Housing facilities close during the university vacation periods:

### APPLY DIRECTLY TO THE UNIVERSITY HOUSING AND FOOD SERVICES OFFICE

University Housing and Food Service Office  
California State University - Chico, Chico, CA 95929-0707  
Telephone: 530-898-6325 Fax: 530-898-6840 Toll Free: 1-800-730-4243  
Web page: [www.csuchico.edu/hfs](http://www.csuchico.edu/hfs) E-mail: [housing@csuchico.edu](mailto:housing@csuchico.edu)

## Craig Hall

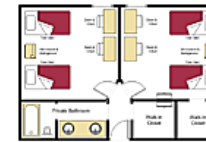
An off-Campus, privately owned residence hall, Craig Hall is located approximately one mile from campus and features fully furnished single-, double- or four-person occupancy rooms, a shared bathroom, telephone and television hook-ups, cable and internet and a meal plan. Rooms are available on a first-come, first-serve basis. Craig Hall remains open (with limited food service) during vacation periods, provided arrangements are made in advance. It is also possible to live at Craig Hall for one or two 7-Week terms, provided space is available. The cost would be pro-rated according to the length of time you attend ALCI.

### Craig Hall Rates 2009-2010

#### Room Type:

#### Bidwell Suite:

Double occupancy room  
in a four person suite



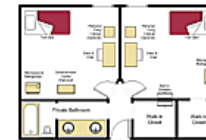
#### Payment Plans: Fall/Spring or 7-week term

\*Room/Board add a meal plan req. \*Room/Board w/600pt. meal plan

**\$5800**                      **\$1775**

#### Sierra Suite:

Single occupancy room  
in a two person suite



**\$7200**                      **\$2530**

#### Meal Plans:

Fall/Spring academic year option: add one plan

- a) 1200 Point Meal Plan                      **\$1200**
- b) 1800 Point Meal Plan                      **\$1800**
- c) 2400 Point Meal Plan                      **\$2400**
- d) 3000 Point Meal Plan                      **\$3000**

\* 7-week term option:  
Rate includes 600 Point Meal Plan

\$500 (USD) Initial Deposit is required to reserve your room. This deposit includes a Non-Refundable \$35 application fee, a security deposit, and a rent deposit. Payment plans are also offered as follows:

- Monthly – 10 monthly payments beginning July 1<sup>st</sup> through April 1<sup>st</sup>
- Semester – 2 payments due on July 1<sup>st</sup> and December 1<sup>st</sup>
- Annual – 1 payment due on July 1<sup>st</sup> (Receives 3% discount)

Notes: Rates are subject to change without notice. Craig Hall facilities close during the college winter break period, but international students may stay with special arrangements.

### APPLY DIRECTLY TO CRAIG HALL

Craig Hall Dormitories  
1400 West Third St., Chico, CA 95928  
Telephone: 530-893-7000 Fax: 530-345-1549 Toll Free: 1-800-559-1393  
Web page: [www.CraigHall.com](http://www.CraigHall.com) Email: [leasing@craighall.com](mailto:leasing@craighall.com)

## Homestay

If you want to experience American culture while improving your language skills, living with a host family or “homestay” is the best option. In addition to regular social interaction with your family, the benefits include a private bedroom with either a private or shared bathroom, transportation to and from school, and meals. As a member of the family, you would be responsible for keeping your living area clean, and likely be expected to help with some of the household duties.

### Homestay Costs

\$200 placement fee

\$1,400 for a 7-week or \$1,000 for a 5-week. Additional dates can be arranged for \$29 per day or \$200 per week.

**APPLY DIRECTLY TO  
INT’L HOMESTAY AGENCY OF N. CALIFORNIA-CHICO (IHA)**

**Int’l Homestay Agency of N. California-Chico (IHA)**

**4102 Nighthawk Way  
Chico, CA 95973**

**Telephone: 530-321-0902 E-mail: lyndalefko@yahoo.com**

Note: Rates are subject to change without notice.

Payment for each session is to be made directly to the host family at the time you move into the home, and at the beginning of following session thereafter.

## Private Apartment

There are apartments available near campus for students who prefer a more independent living option. The average price of rent for a shared unit is \$250 per person per month, excluding utilities. Extra features such as paid utilities, cable, laundry and recreational facilities are sometimes included. Moving into an apartment can be expensive. Landlords often require both first and last months’ rent to be prepaid. You must also pay in advance for utility, cable and telephone services to be started. Move-in costs can be as high as \$900.

A comprehensive list of apartments is distributed **by University Housing and Food Services** free of charge. To request a list, contact that office directly or view at [ww.csuchico.edu/housing/housingOptions/offCampus](http://ww.csuchico.edu/housing/housingOptions/offCampus)

**ALCI lists housing information for the convenience of our students and neither endorses nor recommends any specific housing option. Arrangements between housing providers and participants including hosts, applicants, affiliates, students and clients are independent from ALCI-Chico.**

***Remember, your housing decision plays a vital part in determining your entire living and educational experience in the United States. We urge you to spend time considering your housing options before making a decision***

**AMERICAN LANGUAGE  
& CULTURE INSTITUTE**

